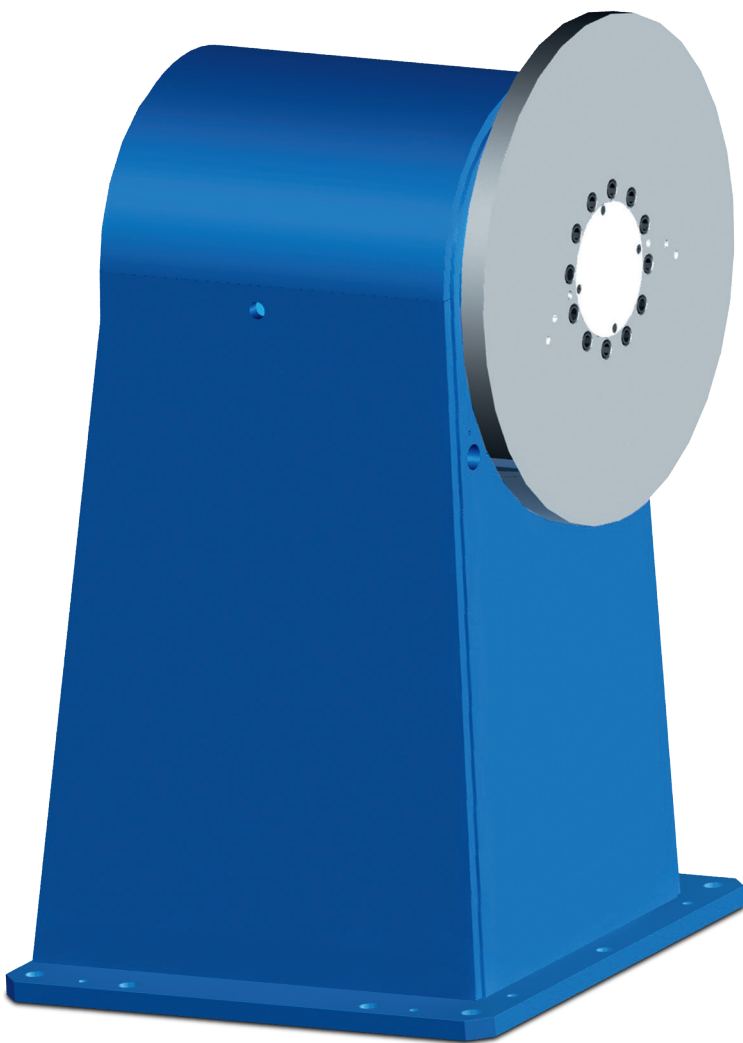


# WH-1000

1-station positioner with horizontal rotation axis



The WH-1000 is a 1-station positioner with a horizontal rotation axis powered by hollow shaft drive.

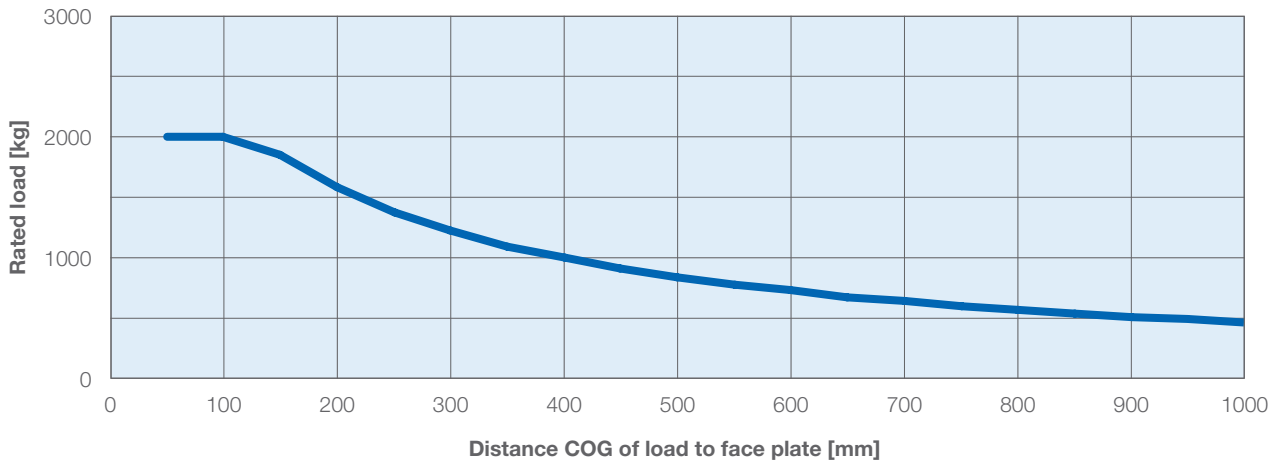
It is a stand-alone positioner which can be used with or without a tailstock (G-series) suitable for integration e.g. in compact welding stations.

In addition, a slip ring device can be used through the gear drive.

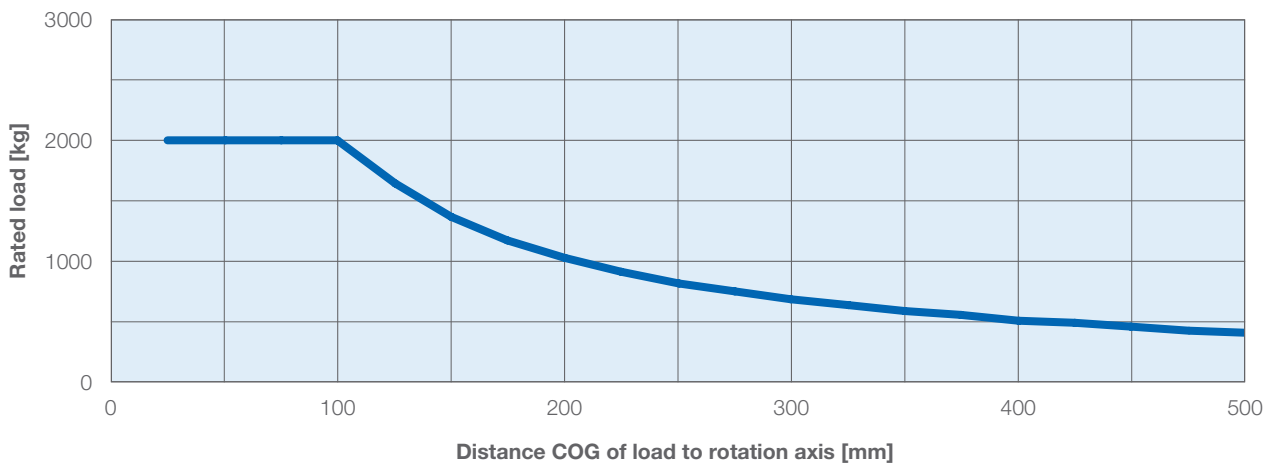
## KEY BENEFITS

- High payload
- Compact design
- Combination with tailstock possible
- High reliability due to high quality components from YASKAWA

**Maximum overhang of load for headstocks with HollowShaftDrives WH-1000 (without tailstock)**



**Maximum excentricity of load for headstocks with HollowShaftDrives WH-1000 (positioning mode)**



Technical data	
Rated load [kg]	1000
Max. load [kg]	2000
Max. speed [°/sec.]	22.5
Rated torque (positioning mode) [Nm]	2040
Max. inertia [kg · m²]	800
Max. load diam. (at max. inertia and rated load) [mm]	2500
Positioning time [180°/sec.]	2.5

Options
Electrical feedthroughs (16-pin, ASI bus, Profi bus, Profinet, Ethernet)
Feedthroughs for compressed air and hydraulics

